



**PRODUCT NAME :** CC3000 WiFi Shield f  
or Arduino R3 With SD Card Supp  
orts MEGA 2560



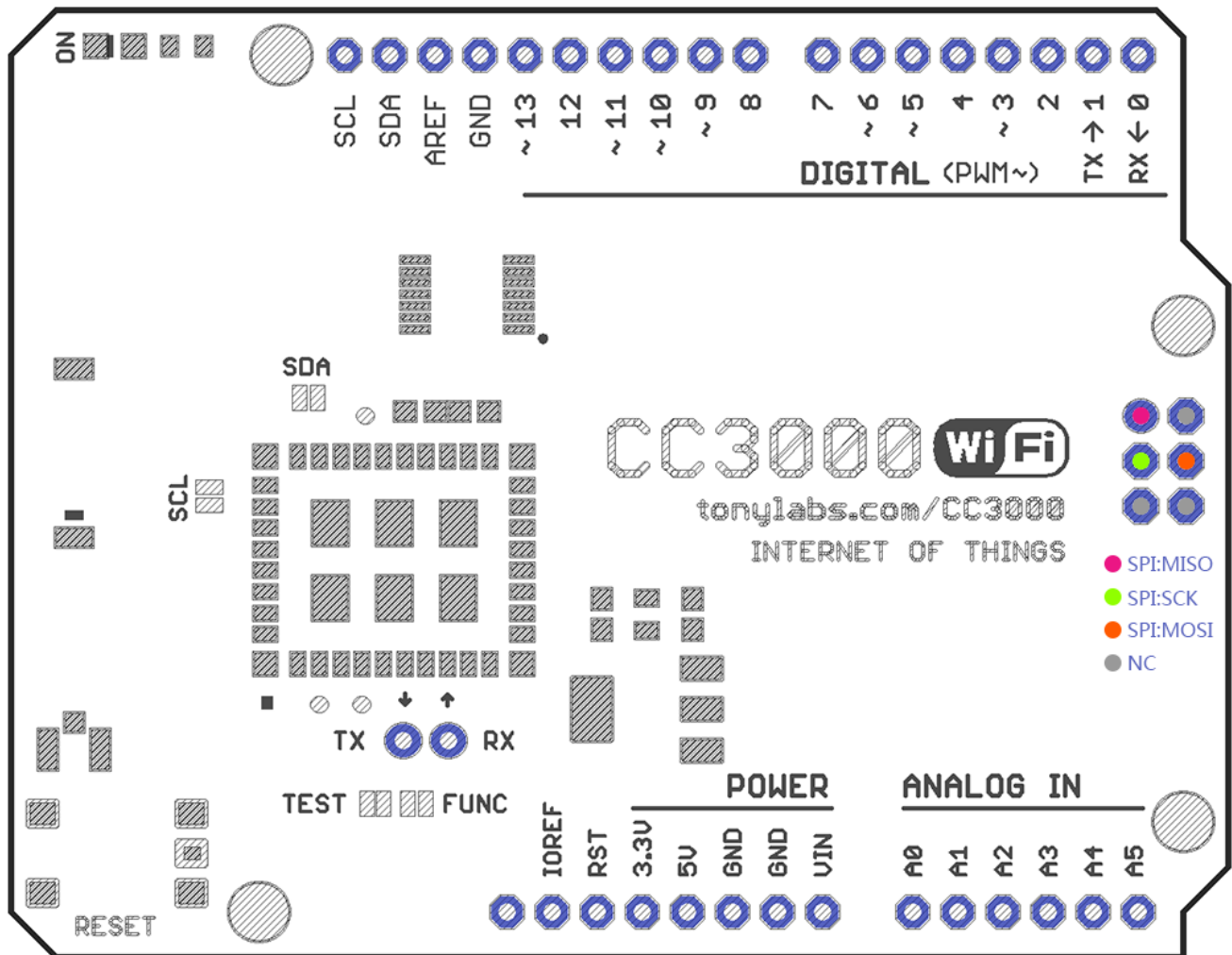
**PRICE :** Rs 2,500.00

**SKU :** RM0074

## DESCRIPTION

The **CC3000** uses **SPI for communication**. You can push data as fast or slow as you want. It has an interrupt system with IRQ pin so you can have asynchronous connections. It supports **802.11b/g, open/WEP/WPA/WPA2** security, TKIP & AES. A built in TCP/IP stack with a "BSD socket" interface. TCP and UDP in both client and server mode, up to 4 concurrent sockets. It does not support "AP" mode, it can connect to an access point but it cannot be an access point.

**Circuit Diagram of CC3000 WiFi Shield For Arduino R3 With SD Card Supports MEGA 2560**



## Features of CC3000 WiFi Shield For Arduino R3 With SD Card Supports MEGA 2560:

- PCB: military grade immersion gold process.
- CC3000: original supplier, firmware ServicePack 1.11.1.
- LDO: 3.3V LDO imported chip buck regulator.
- HEX: Texas Instrument small package.
- Reset button: High quality white SMD Tact Switch.

## Applications of CC3000 WiFi Shield For Arduino R3 With SD Card Supports MEGA 2560:

- IOT based Applications.
- Remote sensor data logger.
- Replacement for **Arduino Wifi Shield**.
- Easy connectivity of microcontroller to internet.
- DIY projects for Internet based applications.

Also Searched as :**wifi shield for arduino uno,cc3000 wifi shield for arduino,wifi shield arduino mega 2560,arduino wifi shield arduino uno.**