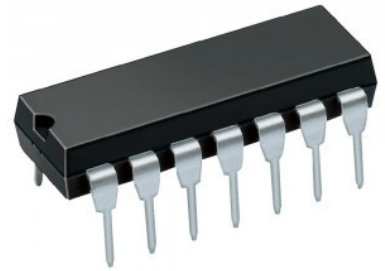




**PRODUCT NAME :** LM2901 Low Power Quad Comparator

**PRICE :** Rs 25.00

**SKU :** RM1924



## DESCRIPTION

The LM2901 devices consist of four independent voltage comparators that are designed to operate from a single power supply over a wide range of voltages. Operation from dual supplies also is possible, as long as the difference between the two supplies is 2 V to 36 V, and VCC is at least 1.5 V more positive than the input common-mode voltage. Current drain is independent of the supply voltage.

## Features of LM2901 Low Power Quad Comparator:

- Low Supply-Current Drain Independent.
- Supply Voltage: 0.8 mA (Typical).
- Low Input Bias Current: 25 nA (Typical).
- Low Input Offset Current: 3 nA (Typical) (LM139).
- Low Input Offset Voltage: 2 mV (Typical).
- Common-Mode Input Voltage Range .
- Includes Ground.
- Differential Input Voltage Range Equal to.
- Maximum-Rated Supply Voltage:  $\pm 36$  V.
- Low Output Saturation Voltage.
- Output Compatible With TTL, MOS, and CMOS.

## Applications of LM2901 Low Power Quad Comparator:

- It is used as a voltage comparator.

**Note:** Images shown is only for representation. The actual product may vary with the picture shown.

Also Searched as : **LM2901 OP-AMP, LM2901 comparator.**