



**PRODUCT NAME : ROBOMART ARDUINO UNO
R3+L293D MOTOR DRIVE SHIELD ST
ARTER KIT WITH BASIC ARDUINO
PROJECTS**

PRICE : Rs 4,099.00

SKU : RM2024

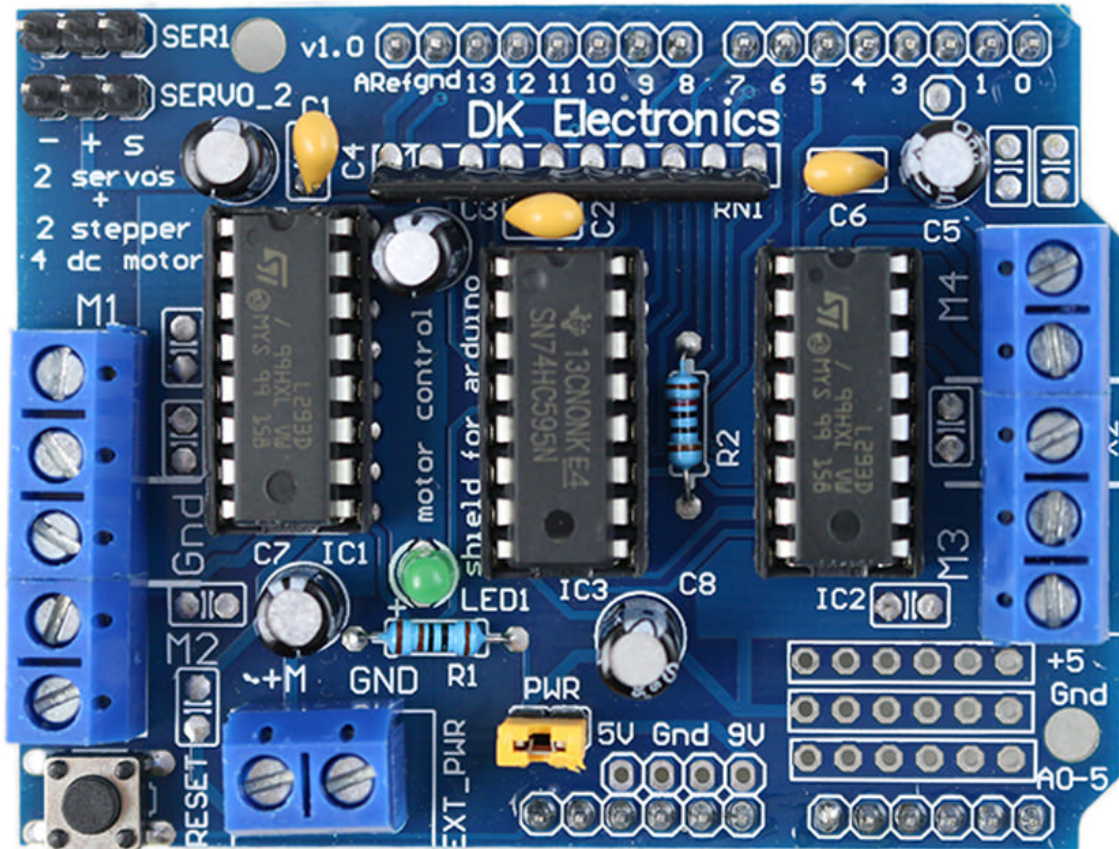


DESCRIPTION

Robomart Arduino UNO R3+L293D Motor Drive Shield Starter Kit is the new Starter Kit, developed specially for those beginners who are interested in Arduino. L293D is a monolithic integrated, high voltage, high current, 4-channel driver.

Basically this means using this chip you can use DC motors and power supplies of up to 12 Volts. It contains everything needed to support the microcontroller, simply connect it to a computer with a USB cable or power it with an AC-to-DC adapter or battery to get started.

Some Images of Robomart Arduino UNO R3+L293D Motor Drive Shield Starter Kit



NOTE:THE PRODUCT MAY BE DIFFER FROM IMAGE GIVEN ABOVE Copyrights by Robomart.com

Features of Robomart Arduino UNO R3+L293D Motor Drive Shield Starter Kit:

- Operating Voltage: 5V.
- Input Voltage (recommended): 7-12V.
- Digital I/O Pins: 14.
- Analog Input Pins: 6.
- DC Current per I/O Pin: 40 mA.
- DC Current for 3.3V Pin: 50 mA.
- Flash Memory: 32 KB (ATmega328) of which 0.5 KB used by bootloader.
- SRAM: KB (ATmega328).
- EEPROM: 1 KB (ATmega328).

- Clock Speed: 16 MHz.

Kit Contents of Robomart Arduino UNO R3+L293D Motor Drive Shield Starter Kit:

- 1x L293D Motor Driver Shield
- 1x Prototype Shield
- 1x 16X2LCD
- 1x Arduino UNO R3
- 1x USB Cable
- 2x Buzzer
- 1x 8*8 Led Dot Matrix
- 1x Temperature Sensor.
- 1x 74HC595
- 1x Infrared Remote Control.
- 1x Black IR Led
- 3x Small Ldr
- 1x Potentiometer.
- 2x Tilt sensor.
- 5x Tactile Switch
- 6x Single Digit Seven Segment Led Display Common Cathode
- 1x Tshop
- Breadboard
- Resistors(1k,10k,100k)
- LED(Red,Green,Yellow)
- Jumper Wires
- Cell Box

Projects of Robomart Arduino UNO R3+L293D Motor Drive Shield Starter Kit:

- L293D Motor Driver Shield Interface.
- Blink LED Interface.
- Tri-color LED module Interface.
- Buzzer Interface.
- Flame sensor Interface.
- Tilt sensor Interface.
- 8x8 matrix LEDs
- Potentiometer Interface.
- Photoresistor Interface.
- LM35 Temperature sensor Interface.
- 7-Segment display Interface.
- Multi-digit 7-Segment display Interface.
- 16X2 LCD Interface.

- Distance sensor Interface.
- XBee shield Interface.
- Keypad Interface.

ADDITIONAL IMAGES



WITH OUR PRODUCT YOU CAN ORDER FROM MAJOR ONLINE STORES. Copyrights by Robomart.com



WITH OUR PRODUCT YOU CAN ORDER FROM MAJOR ONLINE STORES. Copyrights by Robomart.com