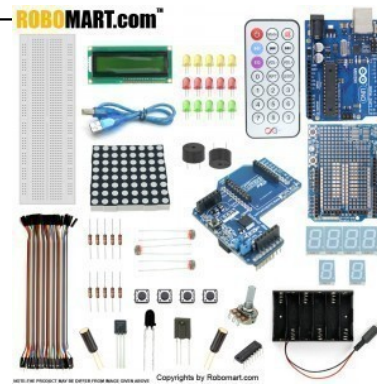




PRODUCT NAME : ROBOMART ARDUINO UNO R3+XBEE SHIELD STARTER KIT WITH BASIC ARDUINO PROJECTS

PRICE : Rs 3,899.00

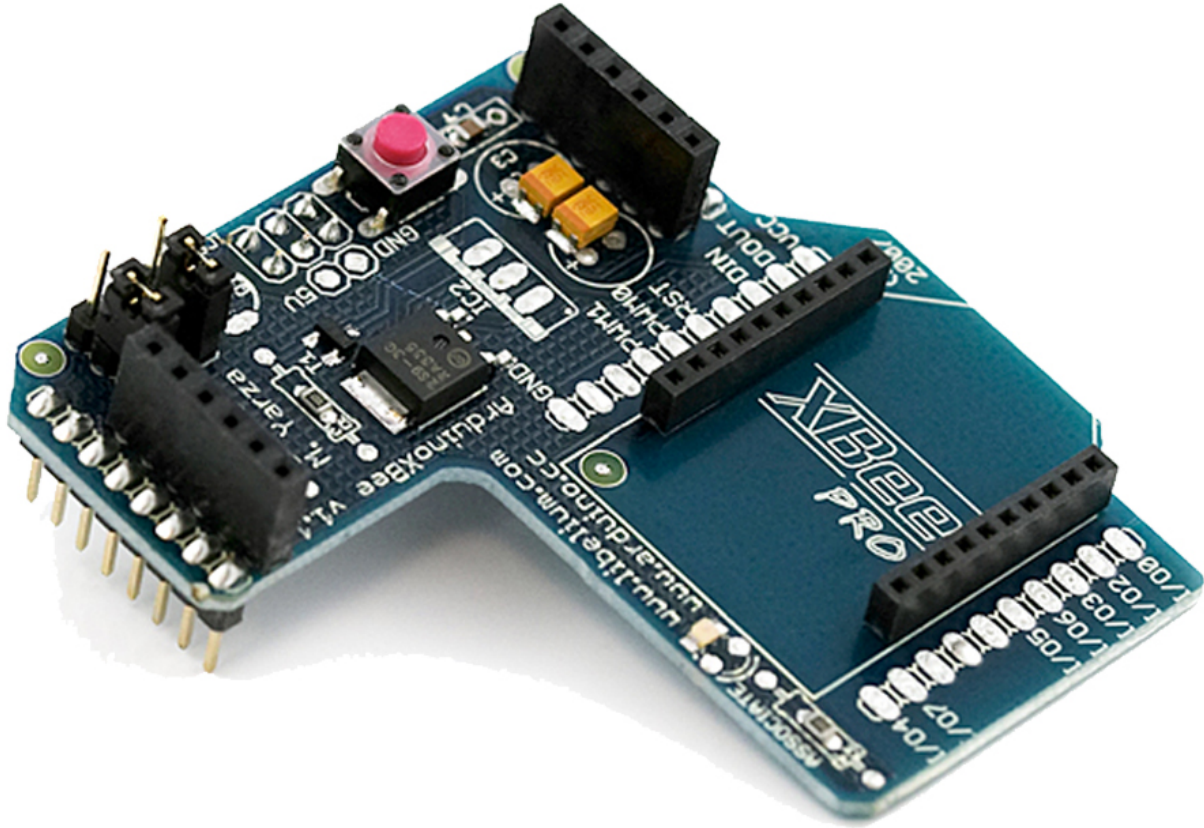
SKU : RM2025



DESCRIPTION

By using **Robomart Arduino UNO R3+XBEE Shield Starter Kit**, we can use **XBee module** easily. Our entire goal for the XBee Kit is to make wireless communication simple. Using this kit, you can transmit remote sensor data, or send data from your computer to update a scoreboard, or drive a robot from your keyboard. UNO R3 now uses an **ATMega16U2** instead of the ATMega8U2 chip. This allows for faster transfer rates and more memory. More 3.3V modules supported, such as Xbee module, Bluetooth module, RF module, GPRS module, GPS module, LCD5110 Backlight and so on, but the original version can only support 5V IO.

Some Images of Robomart Arduino UNO R3+XBEE Shield Starter Kit



NOTE: THE PRODUCT MAY BE DIFFER FROM IMAGE GIVEN ABOVE Copyrights by Robomart.com

Features of Robomart Arduino UNO R3+XBEE Shield Starter Kit:

- Operating Voltage: 5V
- Input Voltage (recommended): 7-12V.
- Digital I/O Pins: 14.
- Analog Input Pins: 6.
- DC Current per I/O Pin: 40 mA.
- DC Current for 3.3V Pin: 50 mA.
- Flash Memory: 32 KB (ATmega328) of which 0.5 KB used by bootloader.
- SRAM: KB (ATmega328).
- EEPROM: 1 KB (ATmega328).
- Clock Speed: 16 MHz.

Kit Contents of Robomart Arduino UNO R3+XBEE Shield Starter Kit:

- 1x XBee shield.
- 1x Prototype Shield
- 1x 16X2LCD.
- 1x Arduino UNO R3.
- 1x USB Cable.
- 2x Buzzer.
- 1x Temperature Sensor.
- 1x 74HC595.
- 1x Infrared Remote Control.
- 1x Black IR Led
- 3x Small Ldr.
- 1x Potentiometer.
- 2x Tilt sensor.
- 4x Tactile Switch.
- 1x Tshop
- Breadboard
- Resistors(1k,10k,100k)
- LED
- Jumper Wires
- 1xCell Box
- 1X8*8 Led Dot Matrix
- 6x Single Digit Common Cathode Seven Segment Led

Projects of Robomart Arduino UNO R3+XBEE Shield Starter Kit:

- Blink LED Interface.
- Tri-color LED module Interface.
- Buzzer Interface.
- Flame sensor Interface.
- Tilt sensor Interface.
- 8x8 matrix LEDs
- Potentiometer Interface.
- Photoresistor Interface.
- LM35 Temperature sensor Interface.
- 7-Segment display Interface.
- Multi-digit 7-Segment display Interface.
- 16X2 LCD Interface.
- Distance sensor Interface.
- XBee shield Interface.
- Keypad Interface.

ADDITIONAL IMAGES



WITH THE PRODUCT MAY BE ENTERED FROM BREAD BOARD ABOVE Copyrights by Robomart.com



WITH THE PRODUCT MAY BE ENTERED FROM BREAD BOARD ABOVE Copyrights by Robomart.com