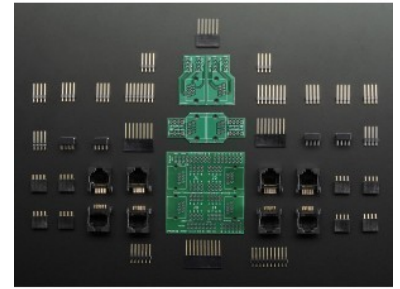




PRODUCT NAME : Patch shield for Arduino - v5.01

PRICE : Rs 2,499.00

SKU : RM3240



DESCRIPTION

The patch shield is a cross between a [patch panel/bay](#) and a [Wingshield](#). Its designed for times when you want to have remote sensors, or a control panel, or LEDs, or...practically anything where you want to avoid doing a lot of icky wiring!

The shield comes with 4 breadboard-friendly satellite headers. To connect, use any off-the-shelf Ethernet cable. On the shield itself, the sockets act as a patch bay so you can quickly try out different wiring schemes. We think this design will come in handy!

The patch shield kit comes with [one main shield PCB and four satellite PCBs](#) as well as [all the components necessary to assemble](#). It does not come with an Arduino, Ethernet cables, breadboards or additional components. The kit is provided unassembled, [but its fairly simple to put together and should only take about an hour using the very nice instructions](#)